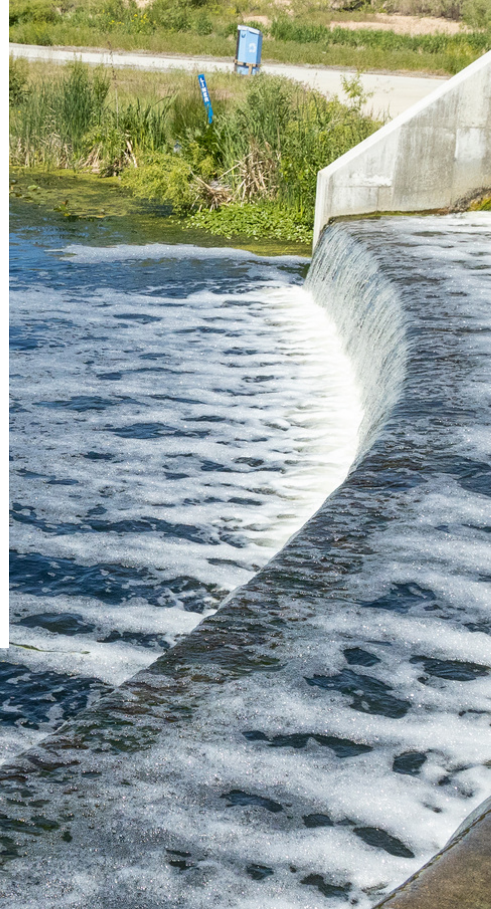




We Get Your Water.

Our mission is to protect the region's health and environment by cleaning water and recovering resources.



WHO IS METRO?

Formed under Colorado law in 1961, Metro Water Recovery is the largest water and resource recovery agency in the Rocky Mountain West. In partnership with 62 local governmental agencies, we serve approximately 2.2 million people in an 805 square-mile service area.

400+ employees

40 board members

2.2+ million people served throughout Denver and parts of Adams, Arapahoe, Jefferson, Douglas, and Weld counties

62 local governments, including cities and sanitation districts

85% of river flow in the South Platte is treated water from Metro's facilities for at least half of the year



OUR PEOPLE

We proudly employ 400+ employees committed to clean water. Metro is a leader in attracting, developing, and engaging top talent who work together to foster an inclusive, professional, and productive work environment.



OUR WORK

We deliver high-quality services by continuously innovating and investing in our processes while upholding the highest standards of safety, financial stewardship, and environmental sustainability.



OUR COMMUNITIES

We positively impact the communities we serve by maintaining strong relationships, communicating effectively, and aligning with our communities' environmental priorities.

INDUSTRIAL PRETREATMENT PROGRAM

Working with Industries to Prevent Pollution

Water recovery entities that are owned and operated by a governmental agency like Metro are called publicly owned treatment works (POTWs) under Clean Water laws and regulations.

POTWs are designed to treat residential sewage (domestic waste which comes from household toilets, showers, dishwashers and sinks) and not the types of contaminants that are present in wastewater from commercial and industrial businesses, including waste haulers. Discharges from businesses can harm the equipment and operations of a POTW as well as the downstream water bodies, beneficial reuse, and can also adversely affect POTW workers.





To minimize the impacts of wastewater discharges from businesses on POTWs, in June of 1978, the Environmental Protection Agency (EPA) created the National Industrial Pretreatment Program (IPP) through the adoption of the General Pretreatment Regulations at 40 CFR 403. POTWs with an EPA-approved IPP are required to regulate the wastewater discharges from businesses within the POTW's service area. The EPA approved Metro's IPP in 1986.



Top: Headworks area at Metro's Robert W. Hite Treatment Facility, where Metro treats and reclaims about 130 million gallons of wastewater per day.
Below: Aerial view of Metro's Northern Treatment Plant in Brighton.

PRETREATMENT REGULATIONS

Metro's IPP regulations, which are part of its approved IPP, are found in Sections 5 and 6 of its Rules and Regulations Governing the Operation, Use, and Services of the System (Rules and Regulations). [Metro's IPP regulations](#) apply to all industrial and commercial businesses discharging wastewater to the sanitary sewer throughout Metro's service area.

-  Industrial and commercial businesses that are still in the planning stage or are existing but considering changes should reach out to Metro's IPP to learn about any IPP requirements for the new or changing business.
-  Metro regulates the discharge from businesses in a variety of ways, including through discharge permits, formal Best Management Practices (BMPs) and via other mechanisms.
-  Industrial and commercial businesses may be required to install Metro-approved monitoring facilities and/or treatment - this includes both existing and new businesses.
-  Metro's IPP regulations include discharge prohibitions (Sections 6.13 and 6.14) and discharge limitations (Section 6.18) for businesses.

[Click here to review Metro's Rules and Regulations](#)



CONTACT

Bret Icenogle, Senior Industrial Pretreatment Manager
Balcenogle@MetroWaterRecovery.com
720-675-7226

Amy Zimmerman, Principal Engineer
AmZimmerman@MetroWaterRecovery.com
303-870-4186

FOLLOW US



www.MetroWaterRecovery.com



[@MetroWaterRecovery](https://www.facebook.com/MetroWaterRecovery)



[@metro-water-recovery](https://www.linkedin.com/company/metro-water-recovery)