

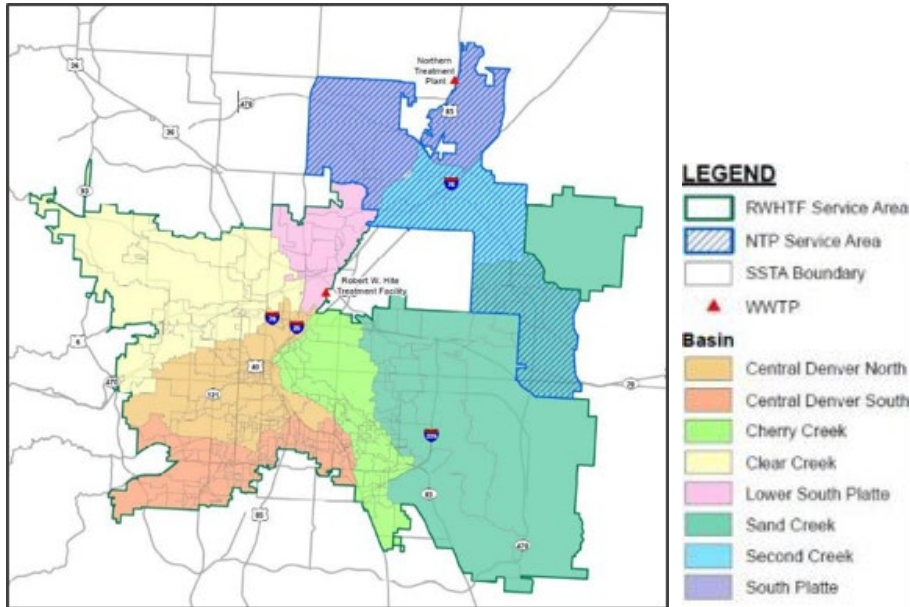


METRO WATER RECOVERY

Robert W. Hite Treatment Facility:
Electrical Transmission Service
Substation

Virtual Neighborhood Meeting
Wednesday, January 19, 2022

Metro Water Recovery: Who We Are



Metro Service Area

- Largest water recovery provider in the Rocky Mountain West, operating two facilities:
 - Robert W. Hite Treatment Facility (220 million gallons per day capacity)
 - Northern Treatment Plant (24 million gallons per day capacity)
- Provides service to 60 local governments
- Serves some 2 million people across a 715-square-mile service area
- Formed in 1961 to protect public health and the South Platte River



Project Purpose

To improve reliability of the region's essential water infrastructure, a new electrical substation is being designed at the RWHTF.

The project will minimize power outages and related facility shutdowns, as well as provide additional capacity required for future operations and regulatory changes to continuously improve regional air and water quality.

This project will result in a more resilient, dependable, and cost-effective power supply for the region's essential water infrastructure.



Conceptual Project Layout



Robert W. Hite Treatment Facility (RWHTF): Existing Electrical Distribution System

- RWHTF went online in 1966
- Currently served by **five** medium voltage distribution feeders fed from **two** substations owned and operated by Xcel
- Limited opportunities to increase capacity to meet future needs
- Susceptible to interruptions outside of Metro's control
- Does not maximize onsite renewable generation



*Metro Administration Building
at RWHTF*



Existing System Challenges

Electrical grid reliability

- Roughly 15 outages/interruptions per year

Aging infrastructure

- More frequent future power outages

Limited Capacity

- Existing grid is at capacity with limited ability to expand

High monthly electricity costs

- Metro is one of the largest single users on the existing grid

Project Benefits

Improved reliability

- Redundant system with virtually no interruptions

Long-term solution

- Required for future operations and regulatory changes

Increased capacity

- Increases ability to accommodate community development, economic growth and improve regional air and water quality

➤ Reduced costs

- Savings of roughly \$725,000 in annual energy costs



Project Site






- Owned by Metro (23.4 acre parcel; 4.4 acres for anticipated project site)
- Undeveloped and un-platted property in unincorporated Adams County
- South of I-270, north of South Platte River and east of Metro's existing Administration Building
- Designated as Adams County agricultural (A-1 zoning)
- Located within 100-year floodplain (requires mitigation)
- Close proximity to existing Xcel transmission line



Project Site:

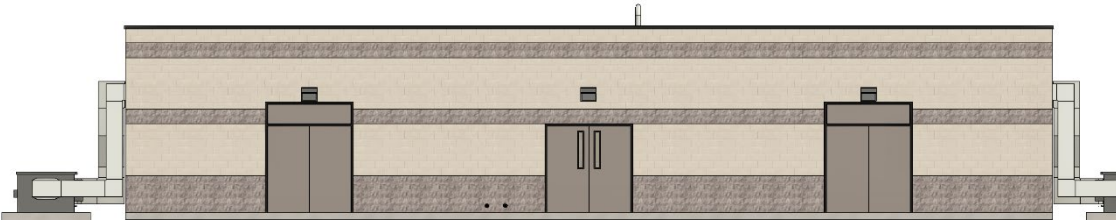
Planned Substation & Switchyard

Legend

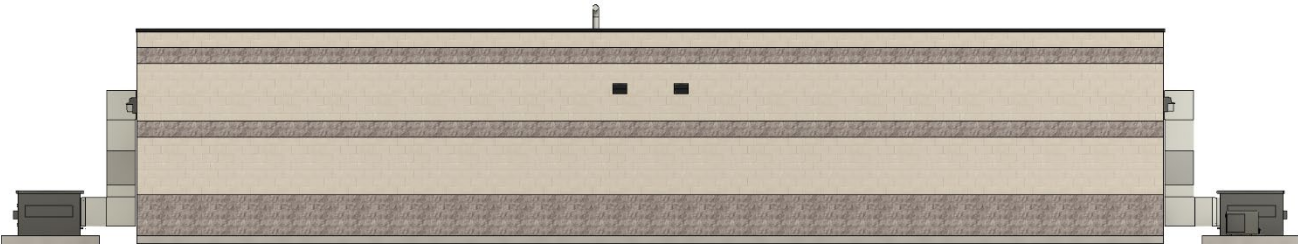
-  Parcel Boundary
-  Project Site
- National Hydrography Dataset
 -  Perennial Stream*
 -  Intermittent Stream*
 -  Waterbody



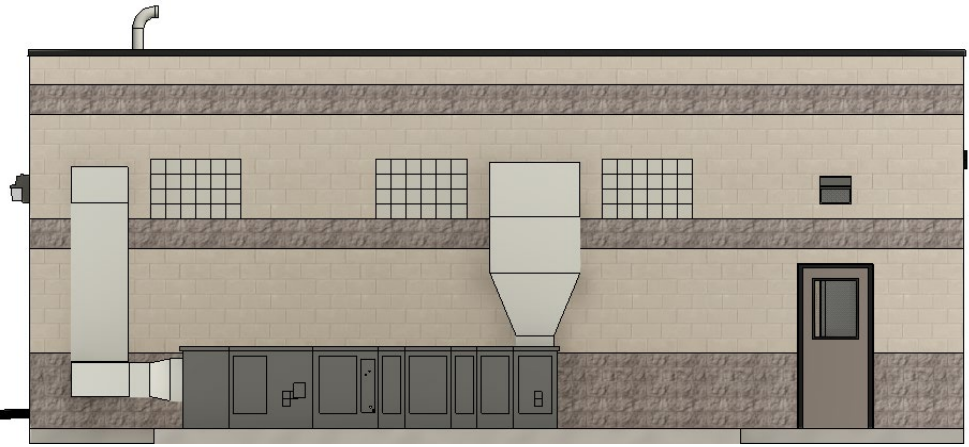
Architectural Elevations: Substation Buildings



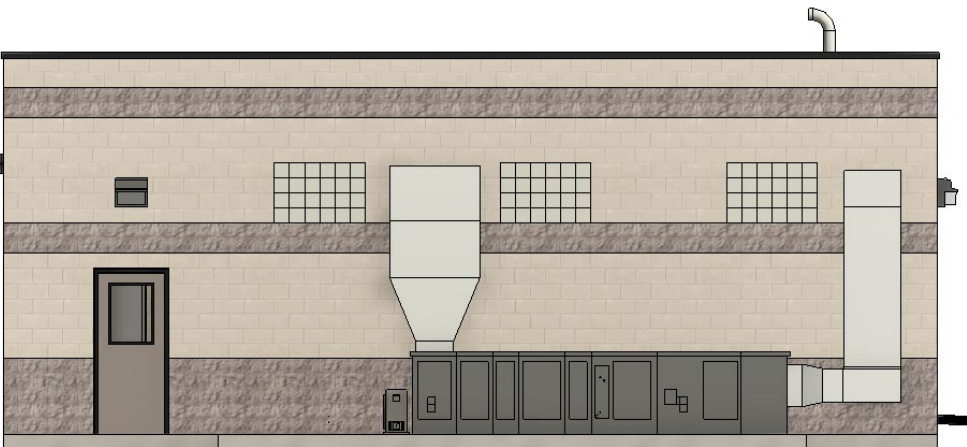
West Elevation



East Elevation



South Elevation

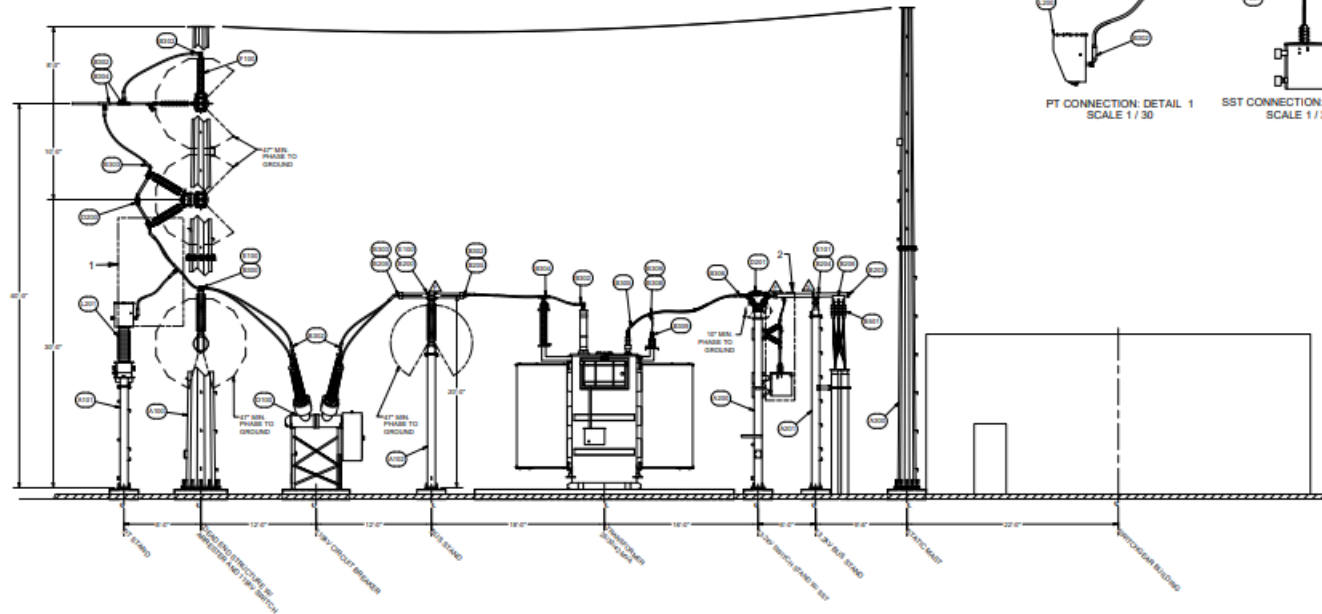


North Elevation



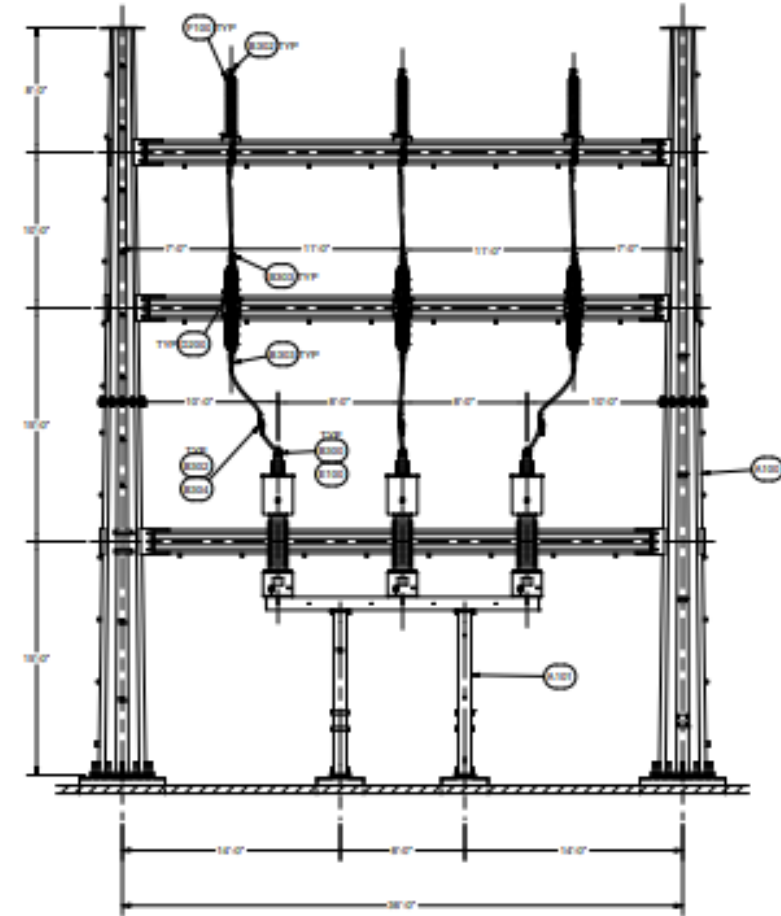
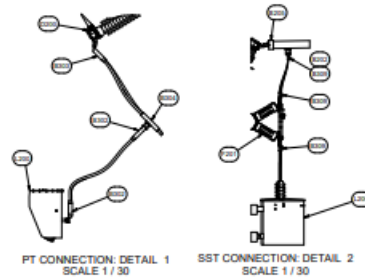
Architectural Elevations

(Metro Owned Substation – Maximum Height: 48')



VIEW A-A
SCALE 1 : 60

ELEVATION KEY
 ○ BILL OF MATERIAL DESIGNATION
 ⊙ FOR DAMPENING PURPOSES
 △ BUS CONNECTION DESIGNATION
 P = PINS
 S = SLIP
 E = EXPANSION

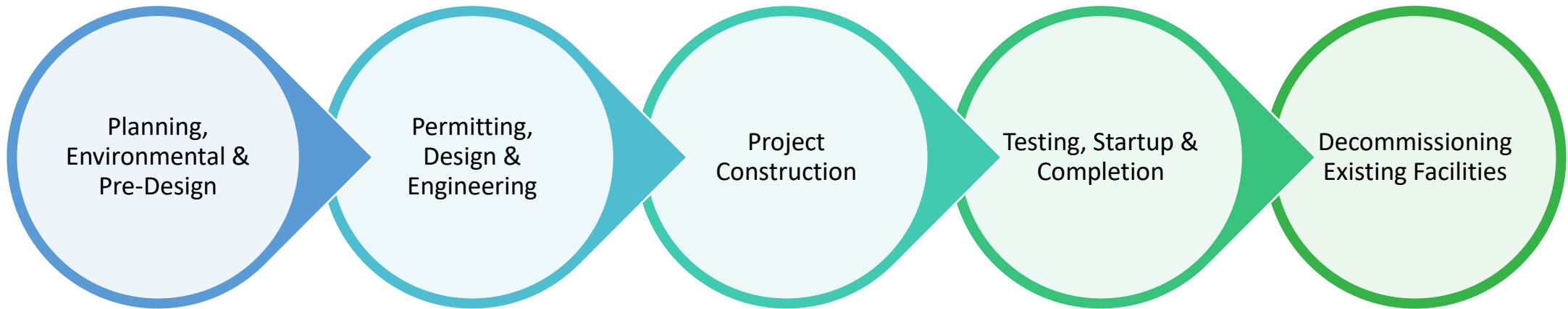


ELEVATION B-B
SCALE 1 : 60

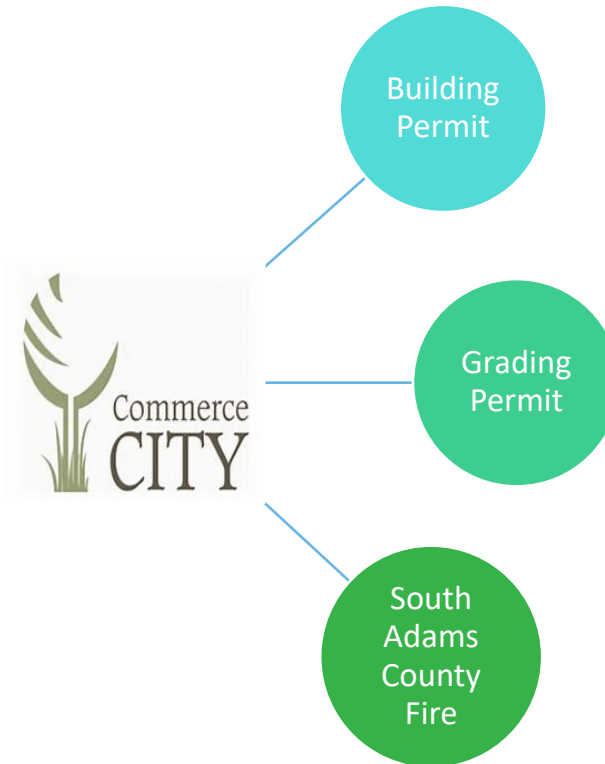
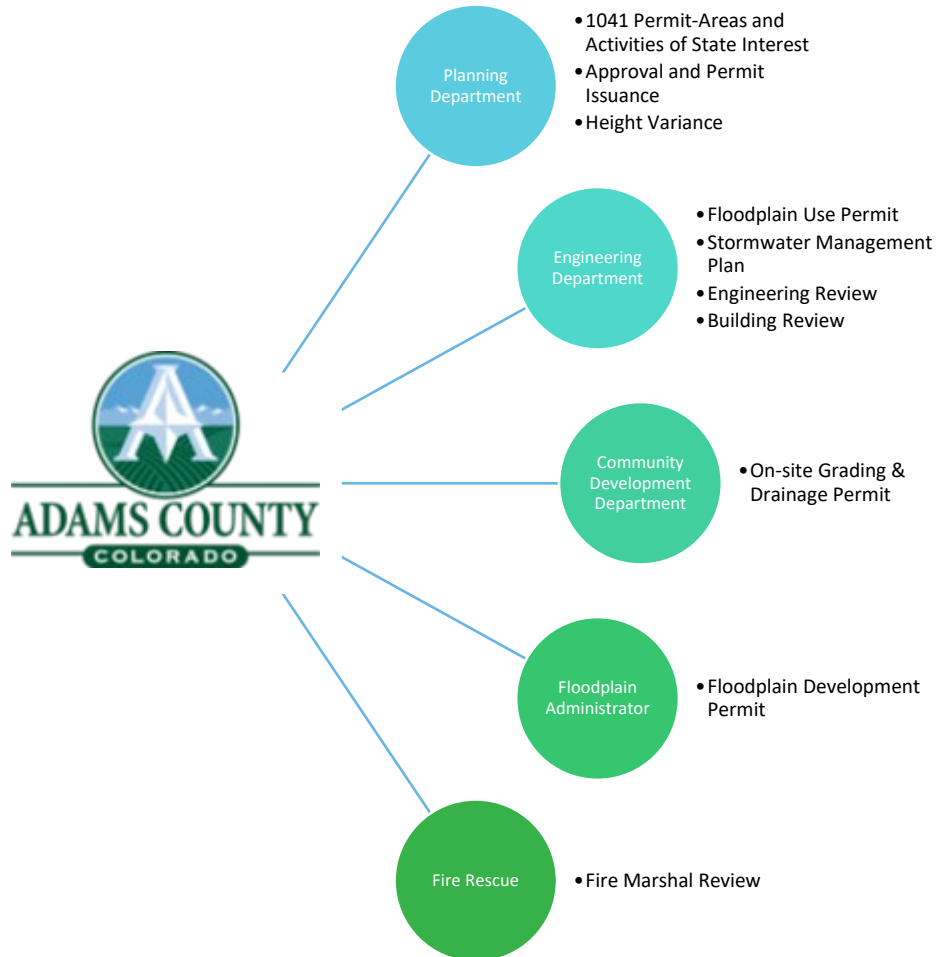
ELEVATION KEY
 ○ BILL OF MATERIAL DESIGNATION
 ⊙ FOR DAMPENING PURPOSES
 △ BUS CONNECTION DESIGNATION
 P = PINS
 S = SLIP
 E = EXPANSION



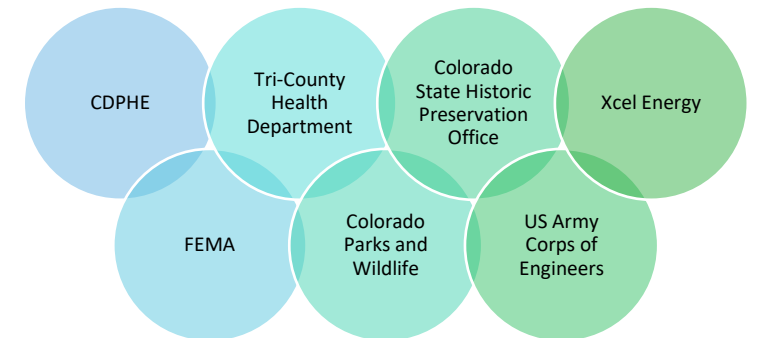
Project Schedule



Permitting Process: Key Partners



Potential Additional Permits



Questions & Comments?

Stay Informed & Contact Us:

Metro Water Recovery

Project Manager: Ben Ruder

6450 York Street, Denver, CO 80229

www.MetroWaterRecovery.com

PublicInfo@MetroWaterRecovery.com

(303) 877-0474



*Photo of Current Conditions
on Project Site*

